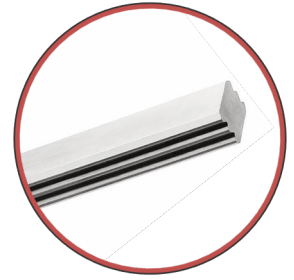


EK SPEC NR 230

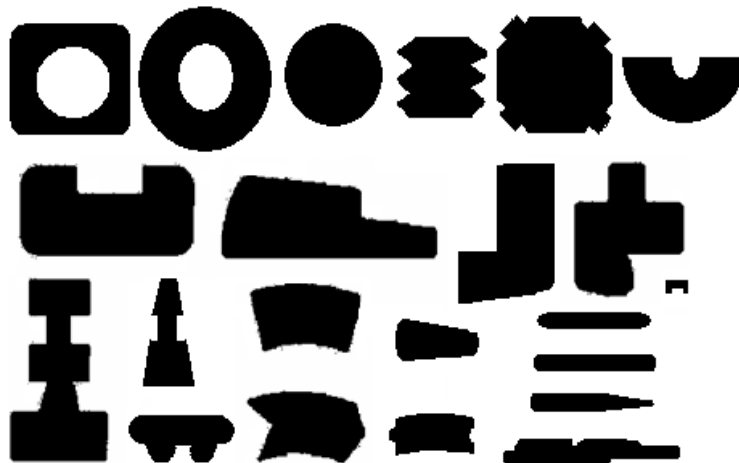
Al-profile, Soft



1 Dimensions

	Min.	Max.
Width (mm)	2.8	40
Thickness (mm)	1.1	32
Area (mm ²)	4.1	800

Examples of different types of profiles that we have manufactured



2 Tolerance of Dimensions

According to agreement.

3 Form of delivery

Packing	Approx Capacity (kg)
GL 800	300
VKT 1250	1100

Other forms of delivery and types of package can be made by agreement

4 Requirements

Aluminium E-Al F7
 Resistivity: max 28.0 nΩm
 Tensile Strength: R_m 60-90 N/mm²
 Elongation: L₂₀₀ min. 25 %

5 References

DIN 40501:4 Aluminium for Electrical Engineering; Wires of Pure ; Technical Conditions of Delivery

6 Miscellaneous

An approximate 15 meter long starting end is at the bottom of the drum, ie at the end of the length. There is a slightly discolored piece and a joint. It is recommended that the starting end is cut away since the tensile strength cannot be guaranteed.
 The profile is usually coated with a thin layer of white oil (paraffin oil), which facilitates uncoiling and reduces the risk of surface damage.
 Coarse dimensions can also be protected with a longitudinal crepe paper.

Author: Hill, Tony
 Documentno: 0202

Approved by: Ciardi, Jonas
 Issue: 3

Approved: 2020-09-23